

Unibilt[®]

Over-N-Under[®] Conveyors



Maximize the use of your valuable floor space



Jervis B. Webb Company
MATERIAL HANDLING SYSTEM SPECIALISTS





Over-N-Under Conveyors

When Unibilt developed its Over-N-Under conveyor concept, the idea behind it was to provide more economical storage and/or transfer of materials over designated distances in a closed-loop configuration.

Unibilt manufactures four types of Over-N-Under conveyors to meet different needs.

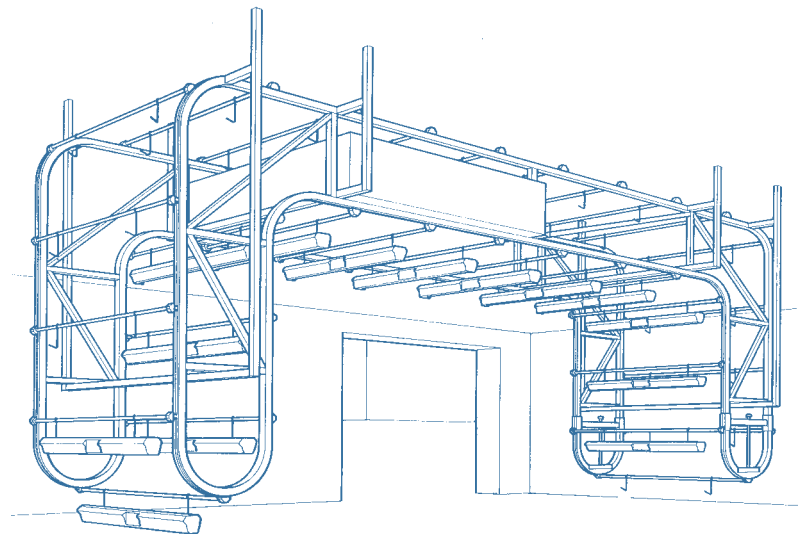
Gravity Flow Over-N-Unders rely on product weight and pitching of the Over-N-Under for parts forwarding. The high end of the conveyor is the load end and the low end is the unload end. Unloading parts creates an unbalanced load across the chain, which causes the remaining parts to flow forward. As the load travels down the lower rail, the empty hooks automatically return over the top rail.



Powered Over-N-Unders utilize a standard Unibilt drive to move parts from load to unload. Powered Over-N-Unders are not restricted to straight loop designs. Horizontal turns and vertical curves can be incorporated to bypass aisles and other obstacles.

Tandem Over-N-Unders are a side by side designed conveyor powered by modified Unibilt drives, which keep the chain in adjacent loops synchronized. Tandem Over-N-Under conveyors are used when increased stability is needed due to wide product load and in applications where load capacities are substantially higher.

Power & Free Over-N-Unders provide a cost effective solution to storage and accumulation problems. The closed loop configuration assures adequate empty carrier storage on the upper section of the loop, while maintaining a "keep full" carrier situation on the lower section. The Power & Free concept utilizes two tracks: one that houses the power chain, and one that houses the free trolleys. Free trolleys are moved through the system by a patented counterweighted pusher dog attached to a single power chain.



Tandem Powered Unibilt Over-N-Under Conveyor

Gravity Flow

Over-N-Under Conveyors are an inexpensive solution to storage and accumulation problems.



Power & Free

Over-N-Under Conveyors offer system flexibility for independent loading and unloading without interrupting production flow.



Tandem

Over-N-Under Conveyors allow production flexibility to move wider and heavier loads efficiently.



Powered

Over-N-Under Conveyors provide flexible, cost efficient ways to move parts over aisles and obstacles.



Some of the many quality components available...

Enclosed Track

This square tubular section is roll-formed from high-strength WebbAlloy II steel. It features lighter weight, yield strength up to 43% stronger than carbon steel, good corrosion resistance, and high rigidity over long spans.



Universal Link Chain

Unibilt link chain features symmetrical chain pins, alternating vertical load carrying and horizontal lateral-guide wheels. This gives maximum flexibility in all directions to help reduce friction and promote long wear life. Each pitch features a true universal joint and is easily assembled. With a steel wheel or nylon wheel option, this link chain can meet many needs.



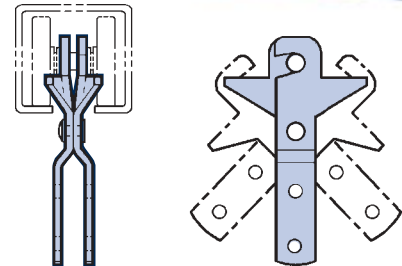
Caterpillar Drive Unit

Specially developed for Unibilt conveyors, the caterpillar drive units are designed to provide maximum flexibility for all enclosed track power requirements. Many outstanding features are available that are not found on any other single compact unit. Drives shown without guards are for illustration purposes only. Guards must always be in place before operating equipment.



Rigid "H" Attachment

The Rigid "H" Attachment engages the load wheel axle with a scissor-like action. This attachment remains perpendicular to the chain. Load capacity is 75 lbs.



Jervis B. Webb Company

MATERIAL HANDLING SYSTEM SPECIALISTS



World Headquarters - Unibilt Enclosed Track Conveyors

34375 W. Twelve Mile Rd., Farmington Hills, MI 48331-5624 USA
1-888-UNIBILT FAX: 1-248-553-1253 E-mail: info@jerviswebb.com

ISO 9001 CERTIFIED

Unibilt has a global network of distributors and representatives to serve you.

Data given in this publication are intended only to aid the engineer in preliminary evaluations and are subject to change without notice.

Unibilt® and Over-N-Under® are registered trademarks of the Jervis B. Webb Company.

Regional Offices

East 1-860-767-7688
Midwest 1-248-553-1295
South 1-704-535-8866
West 1-702-566-5308

Global Sales Offices

England +44-1604-658-150
China +86-314-4320-252
India +91-80-7835-132
Australia +61-(0)3-9464-3599

Canada +1-905-547-0411
Germany +49-6237-97730